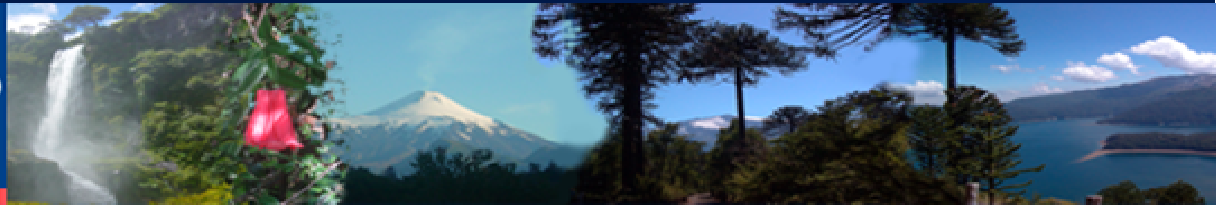




SEREMI  
Región de La Araucanía

SEREMI DE SALUD  
REGIÓN DE LA ARAUCANÍA

Ministerio de  
Salud



# Modelo de Nicho Ecológico para Hantavirus

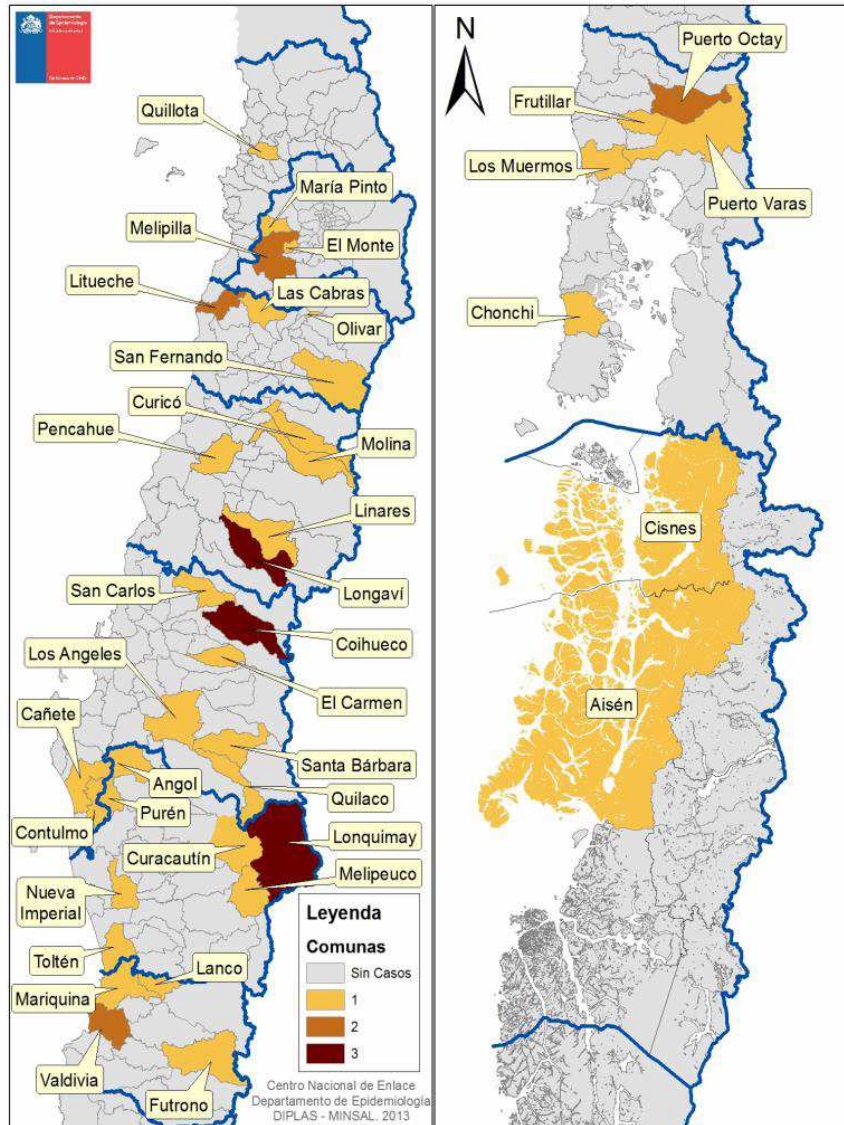
Kissy Ismail Sandoval

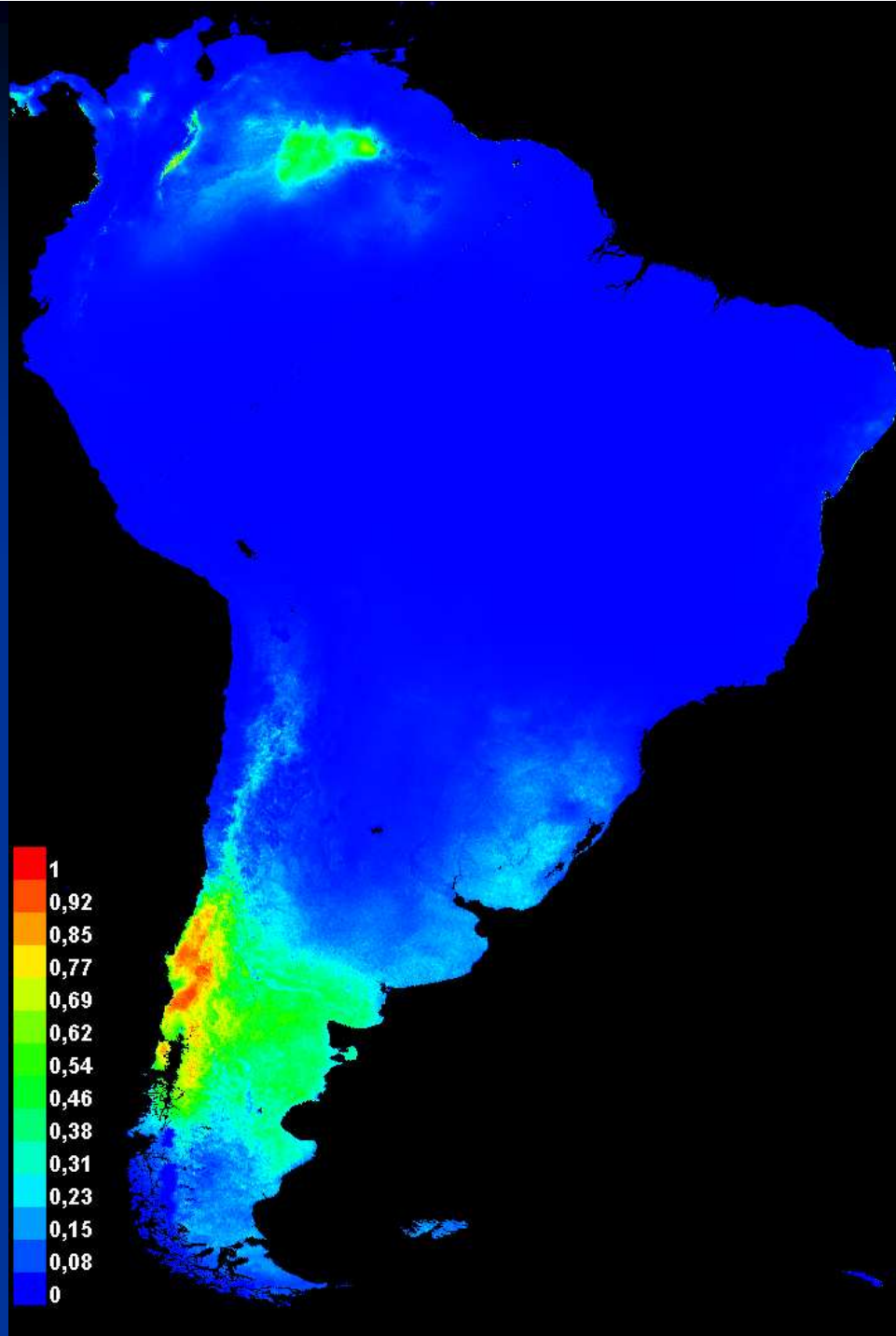
Loreto Uribe Boisier

Tutor: Marcelo Scavuzo

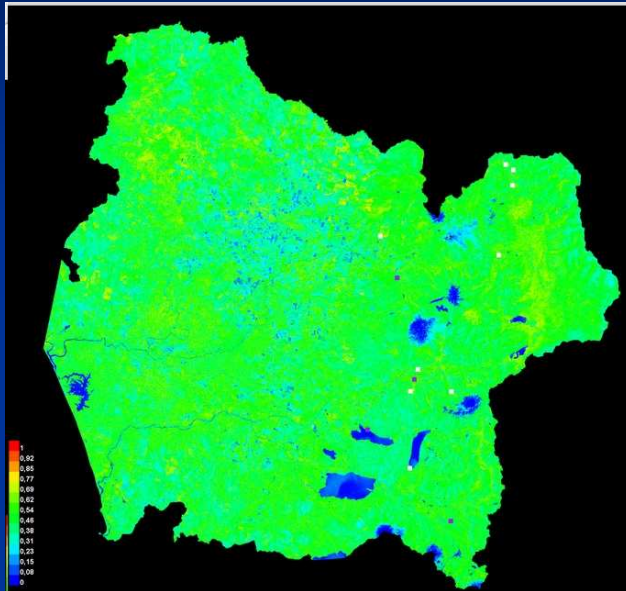
Verónica Andreo

## Casos confirmados de infección por hantavirus según comuna de ocurrencia. Chile, enero - diciembre 2013

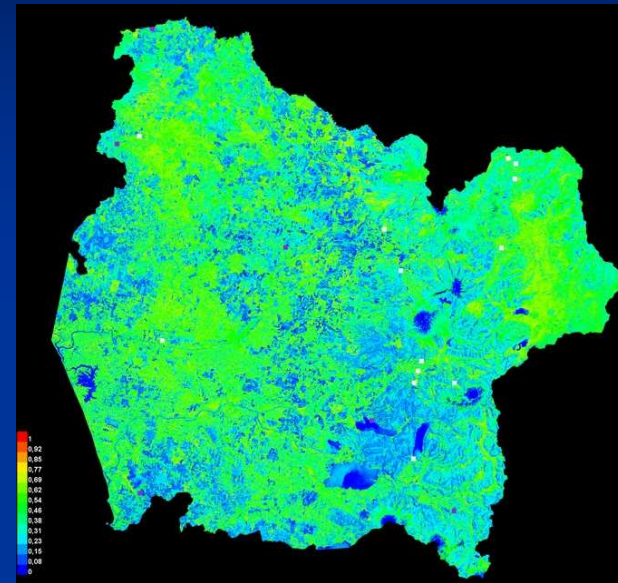




# MODELO DE NICHO ECOLOGICO PARA HANTAVIRUS

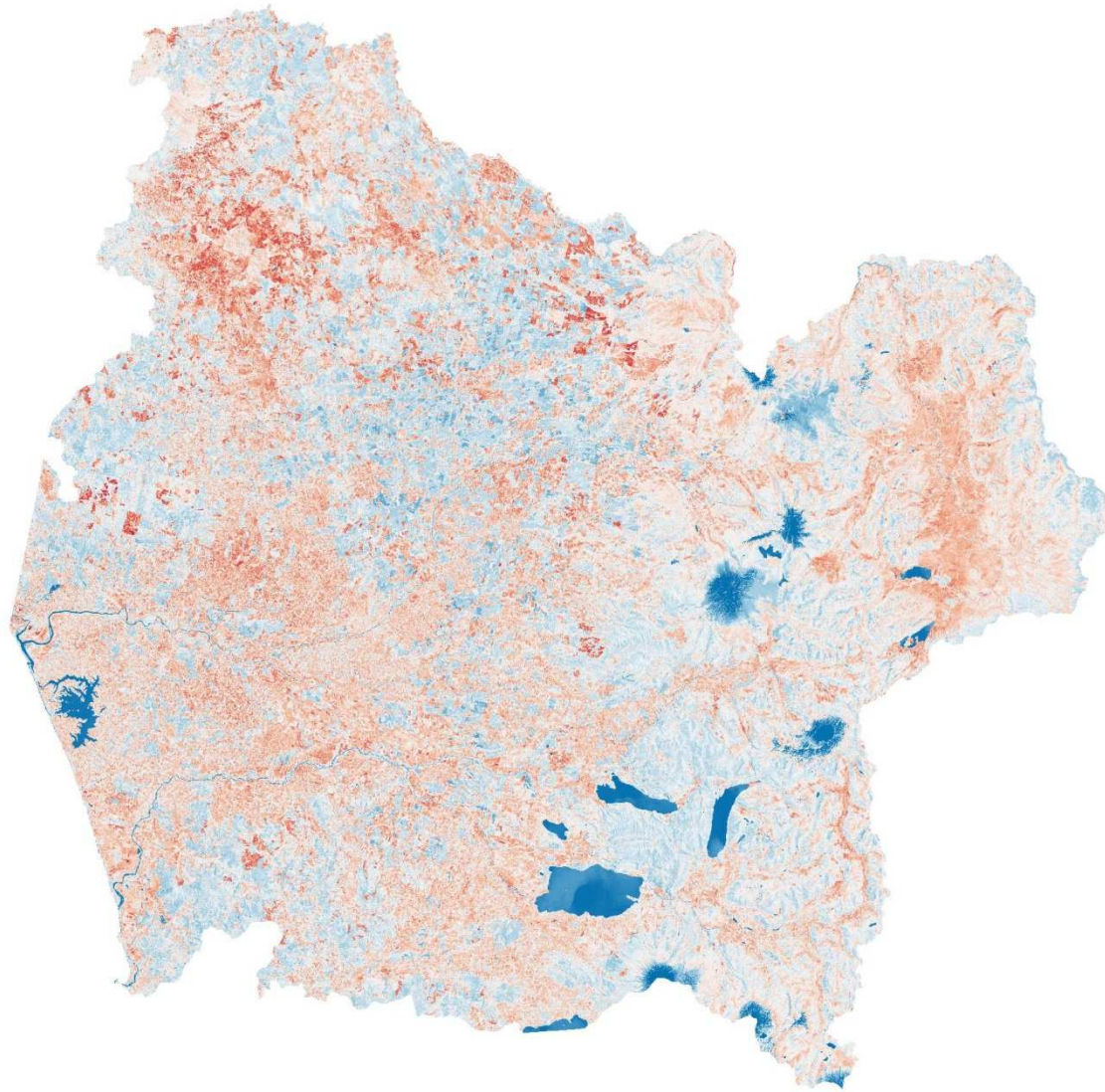


Variable	Percent contribution	Permutation importance
swir1	43.7	0
ndwi	35.1	33.6
ndsi	21.2	66.4
red	0	0
nir	0	0
ndvi	0	0
green	0	0
coastal	0	0
blue	0	0



Variable	Percent contribution	Permutation importance
ndsi	87.8	93.6
ndwi	12.2	6.4
swir1	0	0
ndvi	0	0

# MODELO NICHU ECOLOGICO HANTAVIRUS



hanta\_2

0.104616

0.664552

hanta\_avg

0.039030

0.233679

0.428329

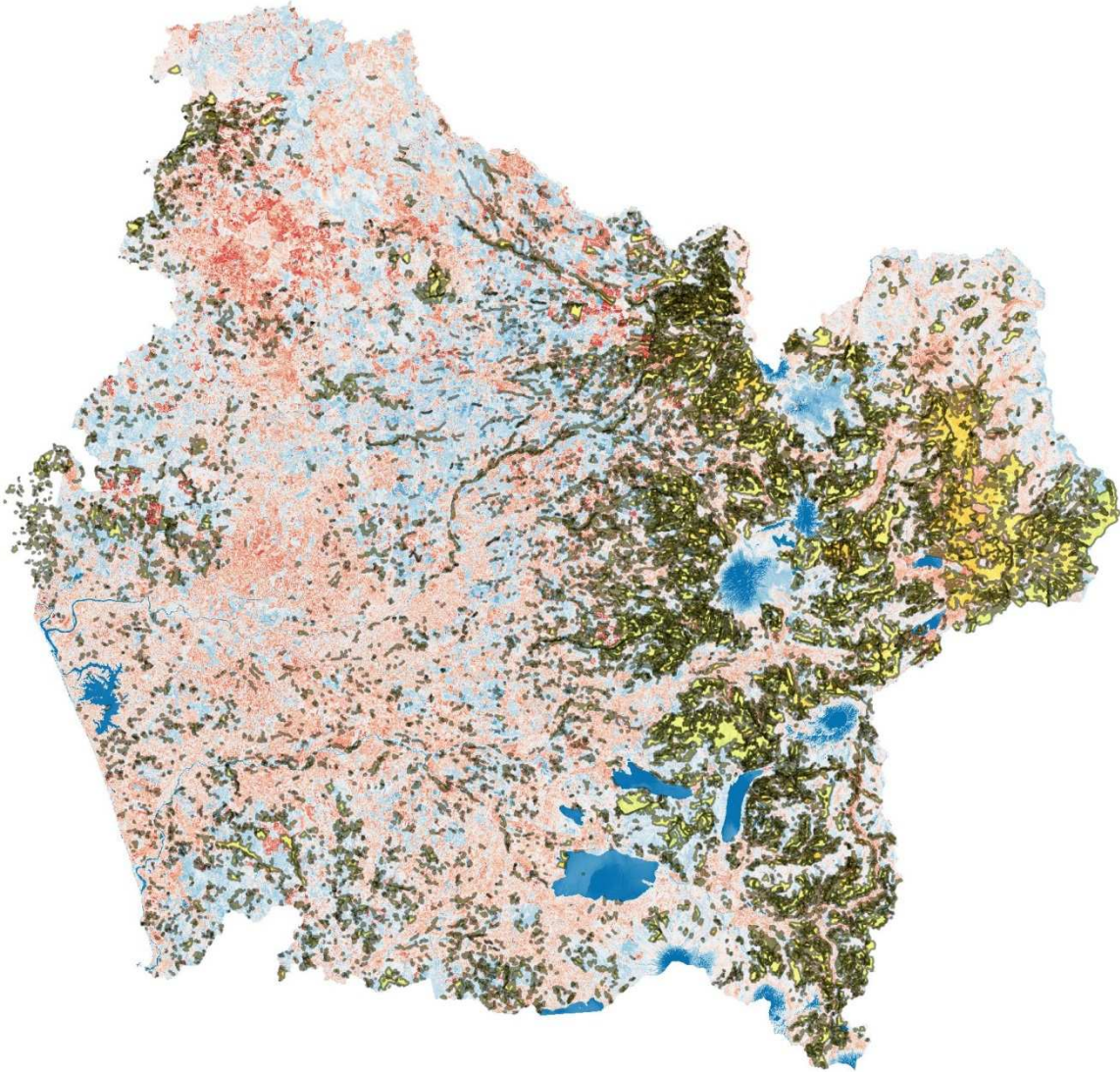
0.622978

0.817627

46 0 46 92 138 184 km



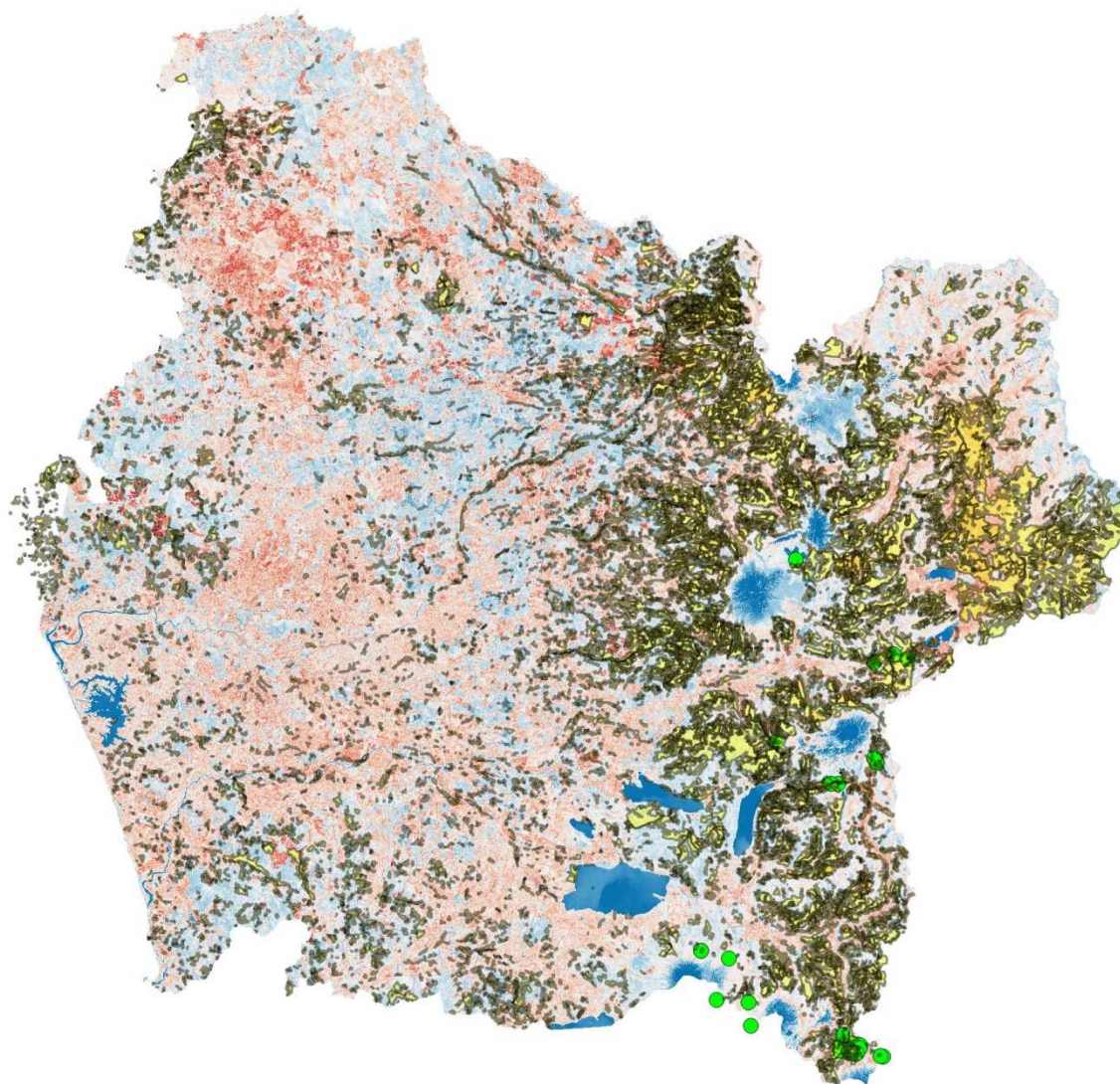
# MODELO NICHU ECOLOGICO HANTAVIRUS








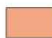



- quila\_y\_colihue\_
- hanta\_2
  - 0.104616
  - 0.664552
- hanta\_avg
  - 0.039030
  - 0.233679
  - 0.428329
  - 0.622978
  - 0.817627



# MODELO NICHU ECOLOGICO HANTAVIRUS

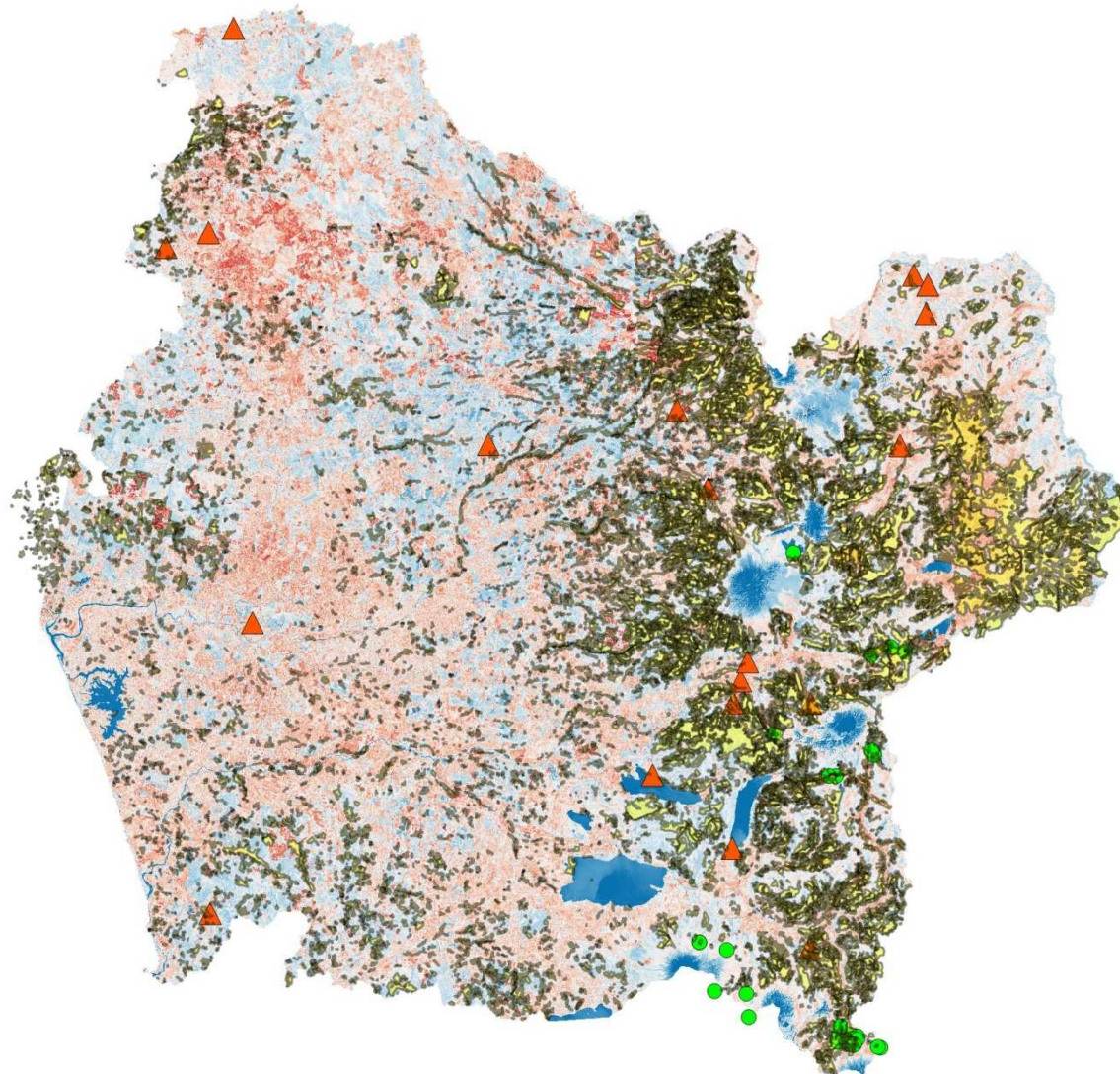


-  quila\_y\_colihue\_1
-  ptos\_quila\_coord
- hanta\_2**
  -  0.104616
  -  0.664552
- hanta\_avg**
  -  0.039030
  -  0.233679
  -  0.428329
  -  0.622978
  -  0.817627

0 46 92 138 184 km



# MODELO NICHU ECOLOGICO HANTAVIRUS



- quila\_y\_colihue\_19s
- merge\_hanta\_wgs84\_19s\_fir
- ptos\_quila\_coord\_19s

## hanta\_2

- 0.104616
- 0.664552

## hanta\_avg

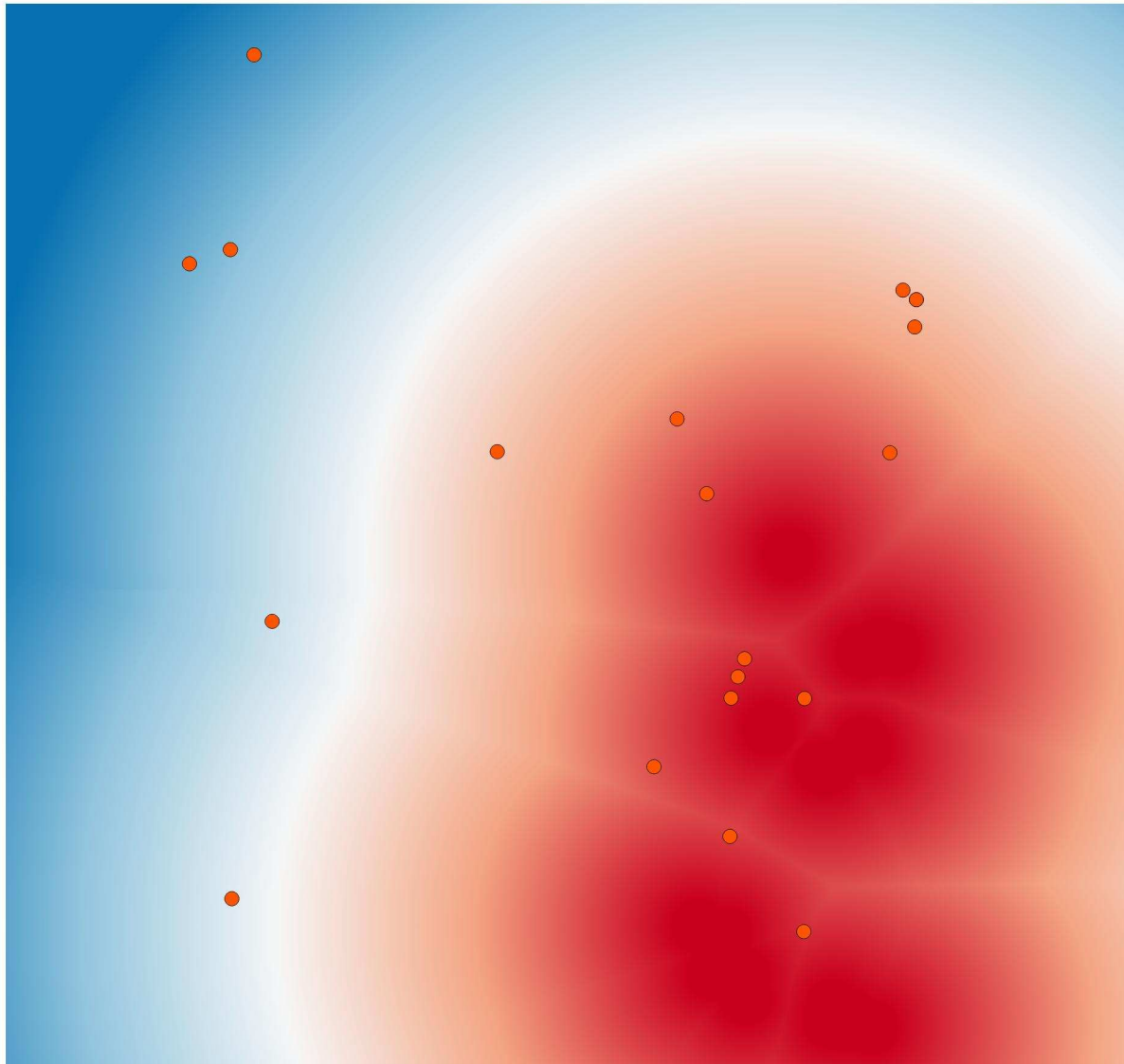
- 0.039030
- 0.233679
- 0.428329
- 0.622978
- 0.817627

0 46 92 138 184 km





## DISTANCIA DE LA OCURENCIA DE CASOS AL FLORECIMIENTO DE LA QUILA







Gobierno  
de Chile

**GRACIAS**